



شركة الاستثمار الوطنية
NATIONAL INVESTMENTS COMPANY

Bursa Kuwait – Daily Market Report MENA Securities – Research & Studies Dep.

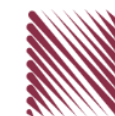
07th November 2022



www.nic.com.kw

DAILY MARKET COVERAGE REPORT

NIC MENA SECURITIES - RESEARCH AND STUDIES DEP



Kuwait Market Watch

Monday, November 7, 2022

Index	Close	DTD Chg Net	DTD (%)	YTD (%)	52W High	52W Low	MKT CAP Bn (KD)	PBV (X)	PE (X)	DY (%)
All Share Index	7,475.48	49.04	0.66%	6.14%	8,472.15	6,788.83	44.40	1.95	32.40	4.06
Premier Index	8,390.65	70.90	0.85%	9.84%	9,437.37	7,343.90	35.13	2.16	33.32	4.51
Main Index	5,541.84	-7.15	-0.13%	-5.85%	6,600.62	5,190.37	9.27	1.18	28.92	2.38
NIC 50 Index	9,397.64	79.43	0.85%	10.27%	10,553.82	8,195.69	34.43	2.16	33.32	4.51

Index	Value Mn(KD)	Volume (Mn share)
All Share Index	52.30	187.59
Premier Index	41.17	79.85
Main Index	11.14	107.74
NIC 50 Index	50.67	160.23

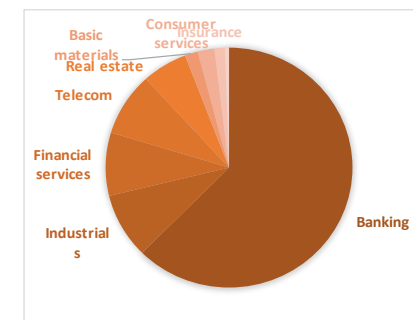
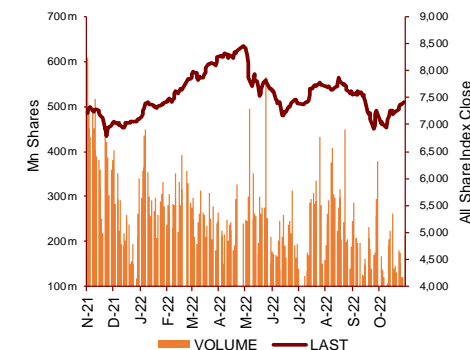
Market Breadth	UP	Down	No Chg
All Share Index	55	51	47
Premier Index	19	4	2
Main Index	36	47	45
NIC 50 Index	27	17	6

Today's Top 5 Gainer %	Close KD	Value KD	DTD (%)
Jiyad Holding	0.024	284,173	11.98%
Kuwait Remal Real Estate	0.009	5,200	11.84%
Independent Petroleum Group	0.489	93,186	8.67%
Real Estate Trade Centers	0.056	38,032	8.46%
Al-Enmaa Real Estate	0.060	21,876	6.55%

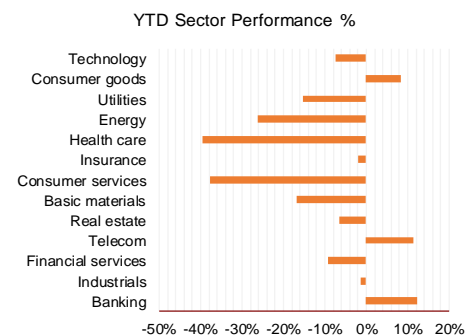
Today's Top 5 Loser %	Close KD	Value KD	DTD (%)
UniCap Investment and Fin:	0.052	5,596	-5.27%
Shuaiba Industrial	0.147	30,305	-5.16%
Al Massaleh Real Estate	0.036	106	-5.07%
Kuwait Real Estate Holding	0.032	19,865	-5.00%
Kuwait and Middle East Fin:	0.101	9,402	-4.72%

Today's Top 5 by Value	Close KD	Trade Val Mn(KD)	DTD (%)
Kuwait Finance House	0.824	14.42	0.37%
National Bank of Kuwait	1.139	7.30	1.79%
GFH Financial Group	0.080	3.03	1.01%
Mobile Telecommunications	0.605	2.69	0.67%
Warba Bank	0.249	2.59	1.63%

Top 5 by Volume	Close KD	Trade Vol Mn(Shrs)	DTD (%)
GFH Financial Group	0.080	37.84	1.01%
Kuwait Finance House	0.824	17.57	0.37%
Jiyad Holding	0.024	12.12	11.98%
Warba Bank	0.249	10.43	1.63%
Aayan Leasing and Investm	0.132	6.72	-1.49%

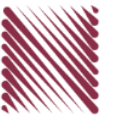


Sector	Close	DTD Chg Net	DTD (%)	YTD (%)	52W High	52W Low	MKT CAP Bn (KD)	PBV (X)	PE (X)	DY (%)
Banking	1,837.68	15.020	0.82%	12.3%	1,992.2	1,557.8	27.351	1.67	25.23	1.83
Industrials	1,125.58	1.300	0.12%	-1.5%	1,443.6	976.3	3.843	1.00	28.26	3.85
Financial services	1,297.78	3.780	0.29%	-9.1%	1,678.3	1,190.4	3.732	1.01	37.14	2.88
Telecom	1,220.39	6.330	0.52%	11.4%	1,514.7	1,055.9	3.735	1.36	13.53	2.80
Real estate	1,248.87	9.080	0.73%	-6.5%	1,438.0	1,155.8	2.608	0.69	28.45	1.31
Basic materials	857.80	3.900	0.46%	-16.7%	1,233.3	800.8	0.748	1.22	9.02	6.26
Consumer services	455.72	0.000	0.00%	-37.7%	776.8	445.4	0.957	2.14	27.74	2.14
Insurance	1,504.14	0.040	0.00%	-1.9%	1,675.7	1,434.5	0.599	0.81	44.08	5.33
Health care	481.52	0.000	0.00%	-39.6%	821.7	420.4	0.239	15.79	13.02	1.00
Energy	1,085.34	30.630	2.90%	-26.1%	1,592.9	975.7	0.220	0.81	20.22	2.30
Utilities	510.53	2.640	0.52%	-15.4%	650.0	494.7	0.213	1.80	15.95	9.33
Consumer goods	1,445.62	-2.240	-0.15%	8.3%	1,641.0	1,208.7	0.138	0.91	36.89	2.18
Technology	605.28	-27.640	-4.37%	-7.4%	843.9	539.1	0.008	0.73	NM	-
	7,475.48	49.04	0.66%	6.1%	8,472.2	6,788.8	44.40	1.95	32.40	4.06



DAILY MARKET COVERAGE REPORT

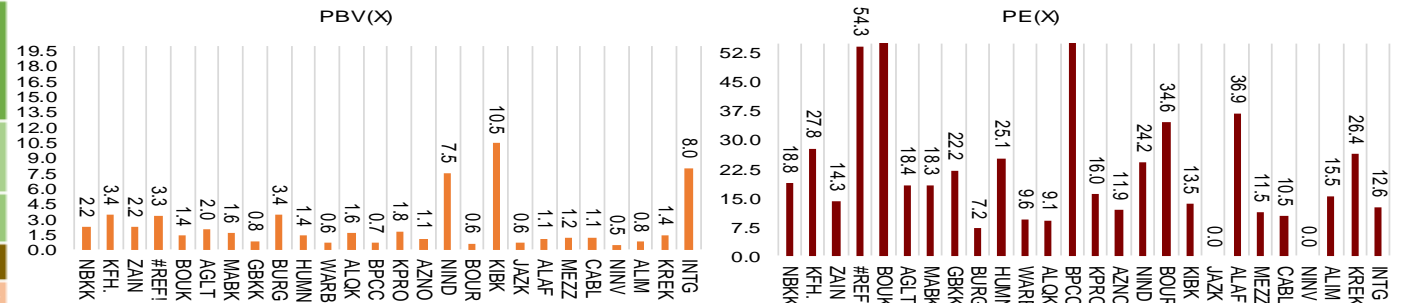
NIC MENA SECURITIES - RESEARCH AND STUDIES DEP



Premier Market

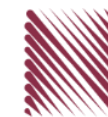
Monday, November 7, 2022

Premier Market	Price			Valuation Multiples			MKT Cap	Price Performance		Trading Indicators		ROE	ROA	52 Week (KD)		MKT Cap
	Close (KD)	Day Δ	Day % Δ	PBV(X)	PE(X)	DY%	Mn KD	MTD(%)	YTD (%)	Value (Mn KD)	(Mn Shrs)	(%)	(%)	High	Low	%
National Bank of Kuwait	1.139	0.020	1.79%	2.19	18.77	2.17	8,602	4%	20%	7.30	6.46	11.7%	1.5%	1.139	0.903	24.49%
Kuwait Finance House	0.824	0.003	0.37%	3.40	27.80	1.33	10,903	1%	9%	14.42	17.57	12.4%	1.6%	1.039	0.720	31.04%
Mobile Telecommunications	0.605	0.004	0.67%	2.20	14.30	5.49	2,618	1%	2%	2.69	4.47	15.6%	4.3%	0.698	0.564	7.45%
Boubyan Bank	0.834	0.010	1.21%	3.31	54.26	0.55	3,118	0%	17%	0.88	1.06	6.8%	0.8%	0.965	0.681	8.88%
Agility Public Warehousing	0.795	0.003	0.38%	1.36	61.06	2.10	2,008	1%	1%	1.71	2.15	2.7%	2.2%	1.062	0.634	5.72%
Mabane Co.	0.890	0.011	1.25%	1.97	18.42	1.50	1,105	2%	19%	0.51	0.58	11.1%	5.5%	0.910	0.717	3.15%
Gulf Bank	0.349	0.004	1.16%	1.59	18.32	1.93	1,117	1%	31%	2.21	6.40	8.9%	0.9%	0.385	0.230	3.18%
Burgan Bank	0.223	0.003	1.36%	0.81	22.17	2.16	732	1%	-7%	0.52	2.36	3.8%	0.7%	0.307	0.205	2.08%
Human Soft Holding	3.401	0.024	0.71%	3.42	7.17	11.84	414	1%	5%	0.52	0.15	49.6%	34.9%	3.704	3.006	1.18%
Warba Bank	0.249	0.004	1.63%	1.37	25.13	0.00	498	3%	-9%	2.59	10.43	5.8%	0.6%	0.298	0.216	1.42%
Qurain Petrochemical Industries	0.251	0.004	1.62%	0.62	9.60	7.29	269	0%	-28%	0.42	1.69	6.4%	5.2%	0.403	0.210	0.77%
Boubyan Petrochemical	0.801	-0.002	-0.25%	1.64	9.06	7.47	418	1%	-6%	0.23	0.28	19.1%	10.1%	1.125	0.769	1.19%
Kuwait Projects Company Holding	0.123	0.003	2.50%	0.65	315.38	4.17	301	4%	-13%	0.61	5.07	0.2%	0.1%	0.215	0.112	0.86%
Shamal Az-Zour Al-Oula Power & Water	0.194	0.001	0.52%	1.80	15.95	9.33	213	1%	-15%	0.08	0.40	14.8%	2.7%	0.246	0.188	0.61%
National Industries Group Holding	0.237	0.001	0.42%	1.05	11.94	4.71	510	1%	-2%	1.44	6.10	5.3%	2.9%	0.314	0.207	1.45%
Boursa Kuwait Securities Co	2.328	0.004	0.17%	7.46	24.22	2.80	467	2%	15%	0.43	0.18	32.4%	22.9%	2.870	1.800	1.33%
Kuwait International Bank	0.192	0.001	0.52%	0.61	34.59	2.01	204	2%	-8%	0.47	2.44	1.7%	0.3%	0.259	0.186	0.58%
Jazeera Airways	1.767	-0.009	-0.51%	10.45	13.49	2.59	389	6%	37%	0.47	0.27	92.1%	11.6%	2.099	0.981	1.11%
Alafco Aviation Lease and Finance	0.168	0.000	0.00%	0.62	NM	0.00	160	0%	-23%	0.18	1.07	-15.9%	-3.4%	0.256	0.162	0.46%
Mezzan Holding	0.360	0.000	0.00%	1.05	36.89	4.36	112	-1%	-38%	0.52	1.44	2.8%	1.3%	0.613	0.352	0.32%
Gulf Cable and Electrical Industries	1.239	-0.001	-0.08%	1.15	11.49	4.84	258	3%	42%	0.18	0.14	11.0%	NM	1.850	0.860	0.73%
National Investments	0.280	0.013	4.87%	1.11	10.47	16.85	223	17%	28%	0.66	2.38	10.9%	8.9%	0.475	0.201	0.64%
Alimtia Investment Group	0.076	0.001	1.19%	0.45	NM	11.92	78	2%	-35%	0.01	0.16	-0.9%	-0.4%	0.138	0.069	0.22%
Kuwait Real Estate	0.106	-0.001	-0.93%	0.78	15.50	2.72	98	-4%	-39%	0.12	1.15	4.9%	1.9%	0.187	0.097	0.28%
Integrated Holding	0.345	0.006	1.77%	1.42	26.38	2.95	87	6%	-7%	1.75	5.11	5.4%	3.4%	0.478	0.321	0.25%
ALI ALGanim	0.805	-0.001	-0.12%	8.02	12.63	5.90	223	1%	nm	0.27	0.34	27.8%	10.9%	0.966	0.750	0.64%
Total	70.90	0.85%	2.16	33.32	4.51	35,126	1.9%	9.8%	41.17	79.51	100%					



DAILY MARKET COVERAGE REPORT

NIC MENA SECURITIES - RESEARCH AND STUDIES DEP



Premier Market Company	Price			Valuation Multiples			MKT Cap Mn KD	Price Performance		ROE (%)	ROA (%)
	Close (KD)	Day Δ	Day % Δ	PBV(X)	PE (X)	DY%		MTD (%)	YTD (%)		
National Bank of Kuwait	1.139	0.020	1.79%	2.19	18.8	2.17	8,602	4.2%	20.0%	11.7%	1.5%
Kuwait Finance House	0.824	0.003	0.37%	3.40	27.8	1.33	10,903	1.4%	8.9%	12.4%	1.6%
Mobile Telecommunications	0.605	0.004	0.67%	2.20	14.3	5.49	2,618	1.0%	1.7%	15.6%	4.3%
Boubyan Bank	0.834	0.010	1.21%	3.31	54.3	0.55	3,118	0.5%	17.1%	6.8%	0.8%
Agility Public Warehousing	0.795	0.003	0.38%	1.36	61.1	2.10	2,008	1.1%	1.0%	2.7%	2.2%
Mabaneer Co.	0.890	0.011	1.25%	1.97	18.4	1.50	1,105	2.1%	19.0%	11.1%	5.5%
Gulf Bank	0.349	0.004	1.16%	1.59	18.3	1.93	1,117	1.2%	31.3%	8.9%	0.9%
Burgan Bank	0.223	0.003	1.36%	0.81	22.2	2.16	732	1.4%	-6.7%	3.8%	0.7%
Human Soft Holding	3.401	0.024	0.71%	3.42	7.2	11.84	414	1.2%	5.5%	49.6%	34.9%
Warba Bank	0.249	0.004	1.63%	1.37	25.1	0.00	498	3.3%	-9.1%	5.8%	0.6%
Qurain Petrochemical Industries	0.251	0.004	1.62%	0.62	9.6	7.29	269	-0.4%	-27.7%	6.4%	5.2%
Boubyan Petrochemical	0.801	-0.002	-0.25%	1.64	9.1	7.47	418	0.5%	-6.0%	19.1%	10.1%
Kuwait Projects Company Holding	0.123	0.003	2.50%	0.65	315.4	4.17	301	4.2%	-13.4%	0.2%	0.1%
Shamal Az-Zour Al-Oula Power & Water	0.194	0.001	0.52%	1.80	16.0	9.33	213	0.5%	-14.9%	14.8%	2.7%
National Industries Group Holding	0.237	0.001	0.42%	1.05	11.9	4.71	510	1.3%	-1.6%	5.3%	2.9%
Boursa Kuwait Securities Co	2.328	0.004	0.17%	7.46	24.2	2.80	467	2.5%	15.2%	32.4%	22.9%
Kuwait International Bank	0.192	0.001	0.52%	0.61	34.6	2.01	204	2.1%	-8.4%	1.7%	0.3%
Jazeera Airways	1.767	-0.009	-0.51%	10.45	13.5	2.59	389	5.7%	37.0%	92.1%	11.6%
Alafco Aviation Lease and Finance	0.168	0.000	0.00%	0.62	NM	0.00	160	0.0%	-22.9%	-15.9%	-3.4%
Mezzan Holding	0.360	0.000	0.00%	1.05	36.9	4.36	112	-0.6%	-37.7%	2.8%	1.3%
Gulf Cable and Electrical Industries	1.239	-0.001	-0.08%	1.15	11.5	4.84	258	2.8%	42.3%	11.0%	9.0%
National Investments	0.280	0.013	4.87%	1.11	10.5	16.85	223	17.2%	27.9%	10.9%	8.9%
Alimtiiaz Investment Group	0.076	0.001	1.19%	0.45	NM	11.92	78	2.4%	-35.3%	-0.9%	-0.4%
Kuwait Real Estate	0.106	-0.001	-0.93%	0.78	15.5	2.72	98	-3.6%	-39.0%	4.9%	1.9%
Integrated Holding	0.345	0.006	1.77%	1.42	26.4	2.95	87	5.8%	-6.8%	5.4%	3.4%
ALI ALGanim	0.805	-0.001	-0.12%	3.72	12.6	5.90	223	1.3%	nm	27.8%	10.9%
Total	70.90	0.85%	2.16	33.32	4.51	34,902	1.9%	9.8%			

Discription	Close (KD)	Day Δ	Day % Δ	50 Day	200 Day	14 Day	Mn KD	MTD(%)	YTD (%)	High	Low
Premier Index	8,391	70.90	0.85%	8,222	8,458	85	34,902	1.9%	9.2%	9,437	7,344

Top 5 Performrs (Today's Price Change)

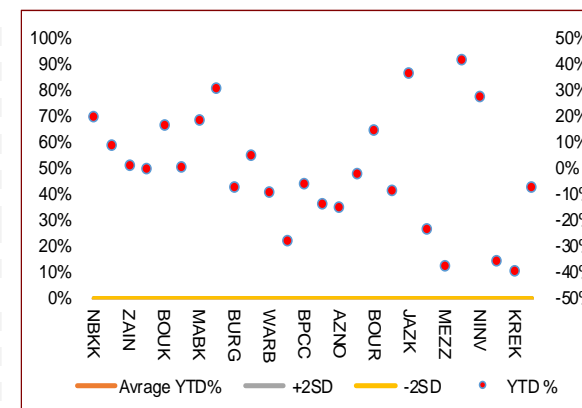
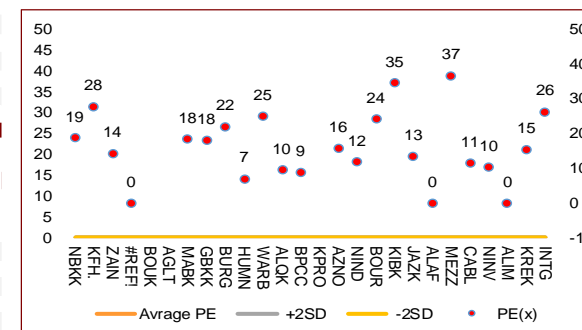
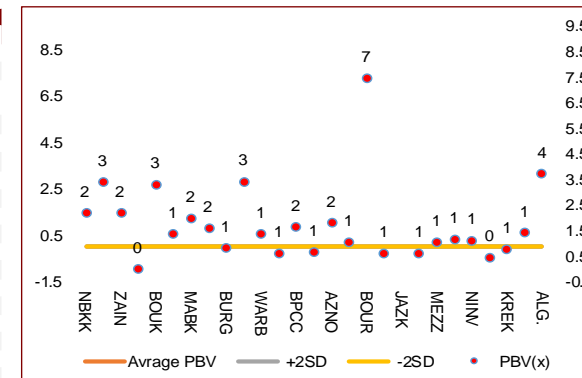
National Investments	0.280	0.013	4.87%	0.255	0.315	89	223	17.2%	27.9%	0.475	0.201
Kuwait Projects Company Holding	0.123	0.003	2.50%	0.135	0.162	65	301	4.2%	-13.4%	0.215	0.112
National Bank of Kuwait	1.139	0.020	1.79%	1.039	1.039	93	8,602	4.2%	20.0%	1.139	0.903
Integrated Holding	0.345	0.006	1.77%	0.369	0.398	48	87	5.8%	-6.8%	0.478	0.321
Warba Bank	0.249	0.004	1.63%	0.238	0.260	85	498	3.3%	-9.1%	0.298	0.216

Middel Performrs (Today's Price Change)

Qurain Petrochemical Industries	0.251	0.004	1.62%	0.277	0.339	76	269	-0.4%	-27.7%	0.403	0.210
Burgan Bank	0.223	0.003	1.36%	0.228	0.253	76	732	1.4%	-6.7%	0.307	0.205
Mabaneer Co.	0.890	0.011	1.25%	0.860	0.818	66	1,105	2.1%	19.0%	0.910	0.717
Boubyan Bank	0.834	0.010	1.21%	0.810	0.810	73	3,118	0.5%	17.1%	0.965	0.681
Alimtiiaz Investment Group	0.076	0.001	1.19%	0.081	0.106	63	78	2.4%	-35.3%	0.138	0.069
Gulf Bank	0.349	0.004	1.16%	0.331	0.323	79	1,117	1.2%	31.3%	0.385	0.230
Human Soft Holding	3.401	0.024	0.71%	3.338	3.321	67	414	1.2%	5.5%	3.704	3.006
Mobile Telecommunications	0.605	0.004	0.67%	0.592	0.611	67	2,618	1.0%	1.7%	0.698	0.564
Kuwait International Bank	0.192	0.001	0.52%	0.201	0.218	59	204	2.1%	-8.4%	0.259	0.186
Shamal Az-Zour Al-Oula Power & Water	0.194	0.001	0.52%	0.100	0.100	64	213	0.5%	-14.9%	1.210	0.996
National Industries Group Holding	0.237	0.001	0.42%	0.244	0.259	71	510	1.3%	-1.6%	0.314	0.207
Kuwait Finance House	0.824	0.003	0.37%	0.843	0.875	69	10,903	1.4%	8.9%	1.039	0.720
Boursa Kuwait Securities Co	2.328	0.004	0.17%	2.241	2.378	69	467	2.5%	15.2%	2.870	1.800
Ahli United Bank BSC	#N/A	#N/A	#N/A	0.305	0.288	50	#N/A	#N/A	#N/A	0.336	0.240

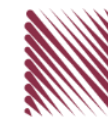
Bottom 5 Performrs (Today's Price Change)

Mezzan Holding	0.360	0.000	0.00%	0.387	0.486	36	112	-0.6%	-37.7%	0.613	0.352
Alafco Aviation Lease and Finance	0.168	0.000	0.00%	0.180	0.202	44	160	0.0%	-22.9%	0.256	0.162
Gulf Cable and Electrical Industries	1.239	-0.001	-0.08%	1.229	1.338	77	258	2.8%	42.3%	1.850	0.860
Boubyan Petrochemical	0.801	-0.002	-0.25%	0.845	0.935	53	418	0.5%	-6.0%	1.125	0.769
Kuwait Real Estate	0.106	-0.001	-0.93%	0.111	0.143	50	98	-3.6%	-39.0%	0.187	0.097



DAILY MARKET COVERAGE REPORT

NIC MENA SECURITIES - RESEARCH AND STUDIES DEP



Banking Sector																
Company	Price			Valuation Multiples			MKT Cap	Price Performance		Trading Indicators		ROE	ROA	52 Week (KD)		MKT Cap
	Close (KD)	Day Δ	Day % Δ	PBV(X)	PE(X)	DY%	Mn KD	MTD(%)	YTD (%)	Value (Mn KD)	(Mn Shrs)	(%)	(%)	High	Low	%
National Bank of Kuwait	1.139	0.020	1.79%	2.19	18.77	2.17	8,602	4.2%	20.0%	7.30	6.46	11.7%	1.5%	1.139	0.903	19.38%
Kuwait Finance House	0.824	0.003	0.37%	3.40	27.80	1.33	10,903	1.4%	8.9%	14.42	17.57	12.4%	1.6%	1.039	0.720	24.56%
Boubyan Bank	0.834	0.010	1.21%	3.31	54.26	0.55	3,118	0.5%	17.1%	0.88	1.06	6.8%	0.8%	0.965	0.681	7.02%
Commercial Bank of Kuwait	0.486	0.000	0.00%	1.15	12.11	4.12	963	0.0%	-3.0%	0.00	0.00	9.9%	1.9%	0.549	0.456	2.17%
Gulf Bank	0.349	0.004	1.16%	1.59	18.32	1.93	1,117	1.2%	31.3%	2.21	6.40	8.9%	0.9%	0.385	0.230	2.52%
Burgan Bank	0.223	0.003	1.36%	0.81	22.17	2.16	732	1.4%	-6.7%	0.52	2.36	3.8%	0.7%	0.307	0.205	1.65%
Ahli United Bank	0.281	-0.003	-1.06%	0.95	24.78	1.68	633	5.2%	-4.5%	0.58	2.06	3.8%	0.8%	0.324	0.250	1.43%
Warba Bank	0.249	0.004	1.63%	1.37	25.13	0.00	498	3.3%	-9.1%	2.59	10.43	5.8%	0.6%	0.298	0.216	1.12%
Al Ahli Bank of Kuwait	0.329	-0.001	-0.30%	0.97	21.62	1.44	582	-1.2%	36.0%	0.64	1.94	4.5%	0.6%	0.355	0.216	1.31%
Kuwait International Bank	0.192	0.001	0.52%	0.61	34.59	2.01	204	2.1%	-8.4%	0.47	2.44	1.7%	0.3%	0.259	0.186	0.46%
Total Banking Sector - 10 Companies							27,351			29.59	50.72					61.61%

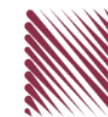
Basic Materials																
Company	Price			Valuation Multiples			MKT Cap	Price Performance		Trading Indicators		ROE	ROA	52 Week (KD)		MKT Cap
	Close (KD)	Day Δ	Day % Δ	PBV(X)	PE(X)	DY%	Mn KD	MTD(%)	YTD (%)	Value (Mn KD)	(Mn Shrs)	(%)	(%)	High	Low	%
Qurain Petrochemical Industries	0.251	0.004	1.62%	0.62	9.60	7.29	269	-0.40%	-27.67%	0.42	1.69	6.4%	5.2%	0.403	0.210	0.61%
Boubyan Petrochemical	0.801	-0.002	-0.25%	1.64	9.06	7.47	418	0.50%	-5.99%	0.23	0.28	19.1%	10.1%	1.125	0.769	0.94%
Al Kout Industrial Projects	0.390	0.000	0.00%	1.40	4.93	10.26	39	0.00%	-21.37%	0.00	0.00	30.5%	20.1%	0.545	0.390	0.09%
Kuwait Foundry	0.293	0.002	0.69%	1.22	12.48	0.00	21	1.03%	-20.60%	0.02	0.08	10.7%	10.3%	0.424	0.260	0.05%
Total Basic Materials - 4 Companies							748			0.67	2.05					1.68%

Consumer Goods																
Company	Price			Valuation Multiples			MKT Cap	Price Performance		Trading Indicators		ROE	ROA	52 Week (KD)		MKT Cap
	Close (KD)	Day Δ	Day % Δ	PBV(X)	PE(X)	DY%	Mn KD	MTD(%)	YTD (%)	Value (Mn KD)	(Mn Shrs)	(%)	(%)	High	Low	%
Mezzan Holding	0.360	0.000	0.00%	1.05	36.89	4.36	112	-0.6%	-37.7%	0.52	1.44	2.8%	1.3%	0.613	0.352	0.25%
Livestock Transport and Trading	0.124	0.000	0.00%	0.77	NM	0.00	26	3.3%	-31.9%	0.00	0.00	-14.5%	-8.2%	0.196	0.112	0.06%
Total Consumer Goods - 2 Companies							138			0.52	1.44					0.31%

Consumer Services																
Company	Price			Valuation Multiples			MKT Cap	Price Performance		Trading Indicators		ROE	ROA	52 Week (KD)		MKT Cap
	Close (KD)	Day Δ	Day % Δ	PBV(X)	PE(X)	DY%	Mn KD	MTD(%)	YTD (%)	Value (Mn KD)	(Mn Shrs)	(%)	(%)	High	Low	%
Jazeera Airways	1.767	-0.009	-0.51%	10.45	13.49	2.59	389	5.7%	37.0%	0.47	0.27	92.1%	11.6%	2.099	0.981	0.88%
Kuwait National Cinema	0.940	-0.010	-1.05%	1.15	9.15	3.16	87	3.5%	6.6%	0.00	0.00	13.3%	6.1%	0.999	0.850	0.20%
Oula Fuel Marketing	0.148	0.001	0.68%	0.91	15.97	3.40	60	2.1%	-5.1%	0.02	0.16	5.6%	2.9%	0.173	0.140	0.13%
Al Soor Fuel Marketing	0.152	0.000	0.00%	0.89	19.39	3.29	61	2.0%	-1.9%	0.00	0.02	4.8%	3.6%	0.169	0.142	0.14%
Sultan Center Food Products	0.112	0.000	0.00%	0.65	0.90	0.00	31	0.9%	-46.7%	0.00	0.04	74.2%	12.2%	0.269	0.103	0.07%
Jiyad Holding	0.024	0.003	11.98%	0.28	NM	0.00	4	11.0%	-69.9%	0.28	12.12	-16.2%	-10.9%	0.099	0.015	0.01%
IFA Hotels and Resorts	0.026	0.000	-0.75%	3.48	176.00	0.00	17	-2.2%	-50.7%	0.02	0.59	2.0%	0.4%	0.073	0.025	0.04%
Kuwait Resorts	0.078	0.000	-0.13%	0.51	11.04	3.75	15	2.5%	-18.7%	0.00	0.06	4.8%	4.2%	0.108	0.067	0.03%
Future Kid Entertainment and Real Estate	0.118	0.001	0.85%	1.02	10.32	0.00	13	1.7%	49.9%	0.00	0.01	10.4%	4.7%	0.130	0.074	0.03%
Al Eid Food	0.249	0.005	2.05%	1.96	15.14	2.80	42	4.2%	7.9%	0.57	2.32	13.5%	10.1%	0.304	0.207	0.09%
Kuwait Hotels	0.170	0.000	0.00%	2.04	21.12	2.94	10	4.3%	142.9%	0.00	0.00	9.9%	6.4%	0.201	0.070	0.02%
Palms Agro Production	0.078	0.000	0.00%	0.79	NM	0.00	4	0.0%	14.4%	0.00	0.00	-13.8%	-10.9%	0.083	0.043	0.01%
ALI ALGanim	0.805	-0.001	-0.12%	3.72	12.63	5.90	223	1.3%	nm	0.27	0.34	27.8%	10.9%	0.966	0.750	0.50%
Total Consumer Services - 13 Companies							957			1.65	15.93					2.16%

DAILY MARKET COVERAGE REPORT

NIC MENA SECURITIES - RESEARCH AND STUDIES DEP



Financial Services	Price			Valuation Multiples			MKT Cap	Price Performance		Trading Indicators		ROE	ROA	52 Week (KD)		MKT Cap
Company	Close (KD)	Day Δ	Day % Δ	PBV(X)	PE(X)	DY%	Mn KD	MTD(%)	YTD (%)	Value (Mn KD)	(Mn Shrs)	(%)	(%)	High	Low	%
Egypt Kuwait Holding	0.365	-0.009	-2.41%	2.14	5.80	5.71	411	-4.7%	-13.9%	0.10	0.26	37.1%	17.5%	0.465	0.353	0.93%
Kuwait Projects Company Holding	0.123	0.003	2.50%	0.65	315.38	4.17	301	4.2%	-13.4%	0.61	5.07	0.2%	0.1%	0.215	0.112	0.68%
National Industries Group Holding	0.237	0.001	0.42%	1.05	11.94	4.71	510	1.3%	-1.6%	1.44	6.10	5.3%	2.9%	0.314	0.207	1.15%
Boursa Kuwait Securities Co	2.328	0.004	0.17%	7.46	24.22	2.80	467	2.5%	15.2%	0.43	0.18	32.4%	22.9%	2.870	1.800	1.05%
GFH Financial Group	0.080	0.001	1.01%	0.89	9.55	4.60	278	2.4%	-18.8%	3.03	37.84	9.3%	1.2%	0.109	0.073	0.63%
National Investments	0.280	0.013	4.87%	1.11	10.47	16.85	223	17.2%	27.9%	0.66	2.38	10.9%	8.9%	0.475	0.201	0.50%
Tamdeen Investment	0.625	0.000	0.00%	0.72	16.16	1.60	213	13.6%	64.9%	0.00	0.00	4.9%	3.8%	0.625	0.309	0.48%
Alimtiqaz Investment Group	0.076	0.001	1.19%	0.45	NM	11.92	78	2.4%	-35.3%	0.01	0.16	-0.9%	-0.4%	0.138	0.069	0.18%
Commercial Facilities	0.173	-0.001	-0.57%	0.55	8.55	8.62	88	-1.7%	-16.0%	0.00	0.02	6.5%	3.6%	0.228	0.165	0.20%
Aayan Leasing and Investment	0.132	-0.002	-1.49%	0.98	12.50	0.00	88	3.1%	-20.2%	0.90	6.72	8.2%	6.0%	0.204	0.104	0.20%
Kuwait Investment	0.130	-0.002	-1.52%	0.62	7.54	18.94	71	-1.5%	-53.7%	0.28	2.11	8.1%	4.6%	0.304	0.113	0.16%
Noor Financial Investment	0.181	-0.002	-1.09%	1.14	5.11	2.62	92	0.6%	-28.9%	0.05	0.29	22.0%	16.2%	0.308	0.163	0.21%
Arzan Financial Group for Financing and Investmei	0.128	0.001	0.79%	0.89	9.42	1.90	103	-3.0%	-17.7%	0.27	2.08	9.4%	7.0%	0.180	0.109	0.23%
Kuwait Financial Centre	0.109	0.000	0.00%	0.53	8.25	8.74	55	1.9%	-36.8%	0.00	0.03	6.9%	4.0%	0.197	0.101	0.12%
Gulf Investment House	0.384	-0.001	-0.26%	3.66	NM	0.00	156	-3.8%	28.0%	0.00	0.01	-3.0%	-2.0%	0.422	0.217	0.35%
Arabi Group Holdings	0.289	0.000	0.00%	1.73	NM	0.00	48	0.7%	-0.7%	0.12	0.41	-29.0%	-4.0%	0.499	0.169	0.11%
Kuwait and Middle East Financial Investment	0.101	-0.005	-4.72%	0.88	11.76	6.60	22	-24.1%	-32.7%	0.01	0.09	7.5%	5.2%	0.175	0.094	0.05%
Privatization Holding	0.035	0.000	-0.28%	0.29	NM	0.00	21	-4.6%	-35.8%	0.01	0.25	-7.1%	-5.5%	0.068	0.032	0.05%
Asiya Capital Investments	0.044	-0.001	-1.13%	0.40	2.78	0.00	34	-1.3%	-15.6%	0.08	1.78	15.5%	15.2%	0.071	0.037	0.08%
Umm Al Qaiwain General Investment Co	0.097	0.003	2.66%	0.57	4.97	5.32	35	2.7%	10.7%	0.00	0.04	12.0%	10.0%	0.108	0.086	0.08%
Securities House	0.058	-0.001	-2.19%	0.58	9.91	0.00	25	-1.9%	-41.3%	0.04	0.73	5.8%	5.0%	0.112	0.052	0.06%
Kamco Investment	0.100	0.001	0.61%	0.55	3.93	10.11	34	0.5%	-22.9%	0.10	0.98	14.5%	6.9%	0.167	0.089	0.08%
First Investment	0.077	0.000	-0.26%	0.67	109.71	0.00	34	2.7%	-8.8%	0.01	0.14	0.6%	0.7%	0.104	0.068	0.08%
Inovest BSC Public	0.079	0.001	1.54%	0.00	NM	0.00	24	2.5%	-32.9%	0.07	0.87	2.7%	1.7%	0.189	0.070	0.05%
Coast Investment and Development	0.075	0.000	0.00%	0.77	23.51	6.67	35	-2.6%	-28.6%	0.00	0.00	3.2%	3.1%	0.126	0.066	0.08%
Al Madar Investment	0.097	0.000	0.00%	0.92	56.73	0.00	20	-1.0%	-18.5%	0.00	0.00	1.6%	1.7%	0.123	0.083	0.05%
Bayan Investment	0.041	0.000	0.00%	0.31	NM	0.00	13	0.1%	-28.7%	0.00	0.00	-2.4%	-1.5%	0.071	0.036	0.03%
Al Manar Financing and Leasing	0.062	0.003	5.08%	0.61	20.20	0.00	16	2.5%	-0.5%	0.00	0.00	2.9%	2.3%	0.079	0.049	0.04%
Manazel Holding	0.028	0.000	0.00%	0.60	9.45	0.00	12	1.1%	-46.1%	0.02	0.62	6.2%	2.0%	0.060	0.025	0.03%
Kuwait Finance and Investment	0.063	-0.003	-4.55%	0.47	27.39	0.00	19	0.0%	-27.4%	0.00	0.00	1.7%	1.6%	0.100	0.055	0.04%
National International Holding	0.106	0.004	3.92%	0.64	14.56	4.76	23	-3.6%	-28.2%	0.01	0.09	4.1%	2.8%	0.167	0.091	0.05%
Osoul Investment	0.091	0.000	0.00%	0.83	NM	11.65	12	2.1%	11.2%	0.00	0.00	-4.4%	-4.0%	0.118	0.062	0.03%
UniCap Investment and Finance	0.052	-0.003	-5.27%	0.58	61.29	0.00	12	-6.1%	-23.9%	0.01	0.11	1.9%	0.2%	0.086	0.050	0.03%
Amar Finance and Leasing	0.063	0.000	0.00%	0.58	3.42	0.00	12	0.0%	-3.8%	0.00	0.00	18.6%	17.3%	0.082	0.058	0.03%
Gulf North Africa Holding	0.152	0.000	0.00%	1.72	59.40	0.00	20	2.7%	76.5%	0.19	1.27	3.0%	2.4%	0.141	0.057	0.05%
International Financial Advisors	0.089	-0.001	-0.78%	0.58	35.70	0.00	22	2.2%	-21.3%	0.07	0.84	1.9%	0.7%	0.127	0.082	0.05%
Credit Rating and Collection	0.015	0.000	0.00%	0.52	NM	0.00	3	-5.0%	-62.2%	0.00	0.02	-0.4%	-0.3%	0.069	0.014	0.01%
Ekttitab Holding	0.011	0.000	0.91%	0.36	NM	0.00	4	3.7%	-47.9%	0.01	0.95	-16.8%	-12.9%	0.023	0.009	0.01%
Kuwait Syrian Holding Co	0.034	0.000	0.00%	0.33	5.48	0.00	6	0.0%	-20.6%	0.00	0.00	8.7%	6.2%	0.059	0.026	0.01%
Warba Capital Holding	0.081	-0.003	-3.57%	0.90	NM	0.00	8	-5.0%	-5.8%	0.01	0.12	-0.8%	-0.7%	0.119	0.070	0.02%
National Consumer Holding	0.114	0.000	0.00%	5.16	NM	0.00	34	2.7%	-4.9%	0.76	6.61	-8.0%	-7.5%	0.162	0.097	0.08%
Al Deera Holding	0.176	0.006	3.53%	1.18	8.87	0.00	16	5.4%	-12.0%	0.00	0.00	12.5%	6.5%	0.200	0.145	0.04%
AL Safat Investment	0.098	0.001	0.51%	1.25	NM	0.00	28	-0.4%	-19.6%	0.05	0.46	-1.8%	-1.6%	0.270	0.091	0.06%
Gulf Franchising Holding	0.090	0.002	2.50%	1.14	3.39	0.00	4	10.0%	-5.9%	0.00	0.01	40.5%	13.1%	0.148	0.063	0.01%
Total Financial Services - 44 Companies							3,729			9.33	79.63					8.40%

DAILY MARKET COVERAGE REPORT

NIC MENA SECURITIES - RESEARCH AND STUDIES DEP

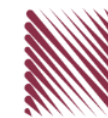


Health Care	Price			Valuation Multiples			MKT Cap	Price Performance		Trading Indicators		ROE	ROA	52 Week (KD)		MKT Cap
	Company	Close (KD)	Day Δ	Day % Δ	PBV(X)	PE(X)		DY%	Mn KD	MTD(%)	YTD (%)			Value (Mn KD)	(Mn Shrs)	
Al-Maidan Clinic for Oral Health Services	0.694	0.000	0.00%	2.75	15.27	0.00	156	-0.1%	-49.6%	0.00	0.00	19.4%	12.5%	1.400	0.556	0.35%
Advanced Technology	0.499	0.000	0.00%	1.11	10.78	3.01	75	0.0%	-3.7%	0.00	0.00	10.7%	2.1%	0.595	0.450	0.17%
Yiaco Medical	0.450	0.000	0.00%	43.51	NM	0.00	8	0.0%	2.7%	0.00	0.00	-161.7%	-4.7%	0.480	0.399	0.02%
Total Health Care - 3 Companies							239			0.00	0.00					0.54%

Industrials	Price			Valuation Multiples			MKT Cap	Price Performance		Trading Indicators		ROE	ROA	52 Week (KD)		MKT Cap
	Company	Close (KD)	Day Δ	Day % Δ	PBV(X)	PE(X)		DY%	Mn KD	MTD(%)	YTD (%)			Value (Mn KD)	(Mn Shrs)	
Agility Public Warehousing	0.795	0.003	0.38%	1.36	61.06	2.10	2,008	1.1%	1.0%	1.71	2.15	2.7%	2.2%	1.062	0.634	4.52%
Human Soft Holding	3.401	0.024	0.71%	3.42	7.17	11.84	414	1.2%	5.5%	0.52	0.15	49.6%	34.9%	3.704	3.006	0.93%
Alafco Aviation Lease and Finance	0.168	0.000	0.00%	0.62	NM	0.00	160	0.0%	-22.9%	0.18	1.07	-15.9%	-3.4%	0.256	0.162	0.36%
Kuwait Cement	0.222	-0.001	-0.45%	0.82	157.45	2.24	158	5.2%	-3.9%	0.00	0.02	0.5%	0.3%	0.295	0.194	0.36%
Gulf Cable and Electrical Industries	1.239	-0.001	-0.08%	1.15	11.49	4.84	258	2.8%	42.3%	0.18	0.14	11.0%	9.0%	1.850	0.860	0.58%
Integrated Holding	0.345	0.006	1.77%	1.42	26.38	2.95	87	5.8%	-6.8%	1.75	5.11	5.4%	3.4%	0.478	0.321	0.20%
Kuwait Portland Cement	0.826	-0.012	-1.43%	1.16	17.28	8.35	83	-1.1%	-15.7%	0.02	0.02	6.8%	5.3%	1.240	0.751	0.19%
Educational Holding Group	2.430	0.000	0.00%	4.13	9.23	21.93	51	-0.8%	-39.3%	0.00	0.00	30.0%	17.2%	4.431	2.330	0.11%
United Projects for Aviation Services	0.231	-0.002	-0.86%	0.85	82.50	0.00	87	13.2%	-6.9%	0.00	0.01	1.0%	0.6%	0.318	0.182	0.20%
Heavy Engineering Industries and Shipbuilding	0.653	0.004	0.62%	1.75	21.57	3.08	118	4.5%	28.3%	0.27	0.42	8.2%	3.2%	0.960	0.442	0.27%
National Industries	0.190	-0.008	-4.04%	0.78	11.98	5.05	66	-0.5%	-1.6%	0.10	0.53	6.5%	4.7%	0.260	0.181	0.15%
ACICO Industries	0.092	0.000	-0.22%	0.42	NM	0.00	30	1.4%	-33.8%	0.02	0.25	-1.9%	-0.5%	0.208	0.076	0.07%
Kuwait Company for Process Plant Construction a	0.319	0.013	4.25%	1.28	20.67	8.09	38	3.9%	-32.7%	0.00	0.00	6.1%	3.5%	0.522	0.286	0.09%
Ras Al Khaimah for White Cement and Constructi	0.141	0.000	0.00%	1.19	26.53	5.88	71	0.7%	11.9%	0.00	0.00	4.6%	3.7%	0.175	0.113	0.16%
Combined Group Contracting	0.411	-0.012	-2.84%	1.53	6.30	5.91	70	-0.2%	16.1%	0.07	0.17	26.3%	5.8%	0.500	0.308	0.16%
Kuwait and Gulf Link Transport	0.058	-0.001	-0.86%	0.34	3.10	0.00	16	0.0%	-15.7%	0.00	0.08	11.6%	2.6%	0.096	0.054	0.04%
Shuaiba Industrial	0.147	-0.008	-5.16%	0.81	12.23	7.74	15	-1.3%	-34.7%	0.03	0.20	6.6%	5.4%	0.310	0.137	0.03%
National Cleaning	0.035	-0.002	-4.08%	0.28	NM	0.00	8	-5.9%	-38.0%	0.00	0.03	-13.9%	-4.1%	0.074	0.031	0.02%
Fujairah Cement Industries	0.038	0.000	0.80%	0.21	NM	0.00	13	-1.8%	-30.2%	0.00	0.00	-12.7%	-6.3%	0.066	0.028	0.03%
Mubarrad Holding	0.081	-0.001	-1.22%	0.62	8.55	6.10	13	1.3%	-26.4%	0.05	0.68	7.3%	6.5%	0.126	0.071	0.03%
Specialities Group Holding	0.099	-0.001	-0.60%	0.52	10.73	6.84	16	7.4%	-20.6%	0.04	0.38	5.0%	3.6%	0.152	0.076	0.04%
Salbookh Trading	0.017	0.000	0.00%	0.52	NM	0.00	2	-7.0%	-60.4%	0.00	0.07	-51.7%	-28.6%	0.061	0.016	0.00%
Metal and Recycling	0.093	-0.004	-4.02%	1.20	NM	0.00	8	3.1%	-2.1%	0.00	0.00	-12.0%	-2.0%	0.124	0.060	0.02%
Equipment Holding	0.037	-0.001	-2.63%	0.59	NM	0.00	3	15.6%	-32.1%	0.00	0.01	-11.1%	-3.2%	0.078	0.030	0.01%
Jassim Transport & Stevedoring	0.330	-0.001	-0.30%	1.12	14.39	4.83	50	0.3%	-18.9%	0.01	0.12	8.0%	6.3%	0.410	0.300	0.11%
Total Industrials - 24 Companies							3,843			4.97	11.61					8.66%

DAILY MARKET COVERAGE REPORT

NIC MENA SECURITIES - RESEARCH AND STUDIES DEP



Insurance	Price			Valuation Multiples			MKT Cap	Price Performance		Trading Indicators		ROE	ROA	52 Week (KD)		MKT Cap
	Company	Close (KD)	Day Δ	Day % Δ	PBV(X)	PE(X)		DY%	Mn KD	MTD(%)	YTD (%)			Value (Mn KD)	(Mn Shrs)	
Gulf Insurance Group	0.970	0.000	0.00%	1.13	4.16	10.93	275	-1.5%	-9.3%	0.00	0.01	28.6%	5.5%	1.200	0.943	0.62%
Al Ahleia Insurance	0.495	0.004	0.81%	0.83	6.83	7.13	107	-2.8%	-2.0%	0.03	0.05	12.5%	4.4%	0.612	0.453	0.24%
Kuwait Insurance	0.510	0.000	0.00%	0.77	7.91	6.47	94	3.2%	31.8%	0.01	0.02	10.4%	6.1%	0.533	0.379	0.21%
Kuwait Reinsurance	0.272	0.000	0.00%	0.98	9.61	1.69	65	-4.9%	7.8%	0.00	0.00	10.8%	3.4%	0.373	0.217	0.15%
Bahrain Kuwait Insurance	0.191	0.000	0.00%	1.33	11.98	8.44	29	0.0%	0.0%	0.00	0.00	11.0%	2.1%	0.191	0.191	0.06%
Warba Insurance and Reinsurance	0.121	-0.005	-3.97%	0.52	8.41	7.94	20	-4.0%	-23.9%	0.01	0.07	6.2%	2.1%	0.165	0.119	0.05%
First Takaful Insurance	0.046	0.000	0.00%	0.60	284.38	0.00	5	0.0%	-9.0%	0.00	0.00	0.2%	0.1%	0.075	0.034	0.01%
Wethaq Takaful Insurance	0.037	0.000	0.00%	0.33	19.37	0.00	4	0.0%	-27.3%	0.00	0.00	1.7%	1.7%	0.075	0.024	0.01%
Total Insurance - 8 Companies							599			0.05	0.15					1.35%

Energy	Price			Valuation Multiples			MKT Cap	Price Performance		Trading Indicators		ROE	ROA	52 Week (KD)		MKT Cap
	Company	Close (KD)	Day Δ	Day % Δ	PBV(X)	PE(X)		DY%	Mn KD	MTD(%)	YTD (%)			Value (Mn KD)	(Mn Shrs)	
National Petroleum Services	0.719	-0.005	-0.69%	1.82	12.89	4.83	70	3.2%	-12.3%	0.02	0.02	14.5%	11.6%	0.880	0.625	0.16%
Independent Petroleum Group	0.489	0.039	8.67%	0.85	12.35	6.67	88	13.7%	-16.8%	0.09	0.21	5.5%	1.0%	0.612	0.368	0.20%
Burgan for Well Drilling Trading and Maintenance	0.117	-0.001	-0.85%	0.43	9.82	2.31	31	1.7%	-12.5%	0.02	0.16	4.4%	1.4%	0.161	0.094	0.07%
Energy House Holding	0.022	0.000	0.00%	0.79	NM	0.00	16	0.5%	-65.5%	0.00	0.00	-1.4%	-2.5%	0.086	0.019	0.04%
Gulf Petroleum Investment	0.015	0.000	-1.91%	0.22	NM	0.00	7	-3.7%	-37.1%	0.03	2.03	-4.0%	-2.6%	0.031	0.013	0.02%
Senergy Holding	0.039	0.000	0.00%	0.77	45.83	0.00	8	-1.0%	-21.4%	0.00	0.02	1.7%	1.4%	0.060	0.036	0.02%
Total Energy - 6 Companies							220			0.16	2.46					0.49%

DAILY MARKET COVERAGE REPORT

NIC MENA SECURITIES - RESEARCH AND STUDIES DEP



Real Estate	Price		Valuation Multiples					MKT Cap	Performance		Trading Indicators		ROE	ROA	2 Week (KD)		MKT Cap
Company	Close (KD)	Day Δ	Day % Δ	PBV(X)	PE(X)	DY%	Mn KD	MTD(%)	YTD (%)	Value (Mn KD)	(Mn Shrs)	(%)	(%)	High	Low	%	
Mabaneer Co.	0.890	0.011	1.25%	1.97	18.42	1.50	1,105	2.1%	19.0%	0.51	0.58	11.1%	5.5%	0.910	0.717	2.49%	
Salhia Real Estate	0.479	0.006	1.27%	1.59	20.24	3.02	247	2.8%	-4.9%	0.55	1.16	7.9%	3.2%	0.570	0.428	0.56%	
Commercial Real Estate	0.099	0.000	-0.40%	0.60	10.12	5.06	173	-1.0%	-21.2%	0.61	6.19	6.2%	3.3%	0.140	0.094	0.39%	
National Real Estate	0.140	0.000	0.00%	0.78	1.27	0.00	260	0.0%	-24.0%	0.18	1.30	64.5%	38.6%	0.212	0.125	0.59%	
Tamdeen Real Estate	0.380	0.000	0.00%	0.74	8.75	2.63	153	2.7%	12.1%	0.00	0.00	9.2%	3.9%	0.380	0.296	0.34%	
Kuwait Real Estate	0.106	-0.001	-0.93%	0.78	15.50	2.72	98	-3.6%	-39.0%	0.12	1.15	4.9%	1.9%	0.187	0.097	0.22%	
United Real Estate	0.076	0.000	-0.13%	0.47	110.72	0.00	82	6.9%	1.3%	0.00	0.01	0.4%	-0.1%	0.121	0.064	0.18%	
First Dubai for Real Estate Development	0.052	0.001	1.37%	0.49	23.94	0.00	38	3.6%	-50.8%	0.08	1.53	2.1%	1.7%	0.119	0.044	0.09%	
Al Mazaya Holding	0.050	0.000	0.61%	0.50	37.37	0.00	31	0.4%	-35.0%	0.03	0.55	1.3%	0.7%	0.088	0.043	0.07%	
Ajial Real Estate Entertainment	0.283	0.000	0.00%	0.42	18.63	1.77	55	3.7%	-6.9%	0.00	0.00	2.2%	1.8%	0.344	0.268	0.12%	
Injazzat Real Estate Development	0.080	0.000	0.00%	0.47	6.35	6.29	27	2.8%	-20.5%	0.00	0.04	7.5%	3.9%	0.114	0.070	0.06%	
Munshaat Real Estate Projects	0.063	0.000	0.16%	1.88	5.19	0.00	20	4.3%	-12.4%	0.00	0.00	42.9%	4.5%	0.076	0.052	0.05%	
Aayan Real Estate	0.069	0.000	0.58%	0.48	22.44	0.00	29	2.8%	-22.1%	0.00	0.06	2.2%	2.3%	0.102	0.056	0.06%	
Al Argan International Real Estate	0.097	0.002	2.53%	0.32	35.64	0.00	25	11.2%	-16.8%	0.00	0.01	0.9%	0.3%	0.144	0.073	0.06%	
Al-Enmaa Real Estate	0.060	0.004	6.55%	0.66	NM	0.00	27	1.7%	-19.2%	0.02	0.37	-5.9%	NM	0.089	0.050	0.06%	
Arkan Al Kuwait Real Estate	0.119	0.000	0.00%	0.84	11.60	5.04	30	-4.0%	-4.0%	0.00	0.00	7.4%	2.3%	0.150	0.113	0.07%	
Kuwait Business Town Real Estate	0.060	0.002	3.28%	0.75	16.69	0.00	34	-3.4%	-26.4%	0.10	1.67	3.8%	2.8%	0.094	0.046	0.08%	
Dalqan Real Estate	0.211	0.001	0.48%	1.89	195.37	0.00	13	1.9%	-2.8%	0.01	0.06	1.0%	1.0%	0.264	0.195	0.03%	
Sokouk Holding	0.023	0.000	-0.85%	0.54	NM	0.00	13	-6.1%	-28.8%	0.01	0.33	-2.9%	-1.7%	0.037	0.020	0.03%	
Tijara and Realestate Investment	0.055	0.000	0.18%	0.49	8.31	5.49	20	1.3%	-10.5%	0.04	0.68	6.0%	3.3%	0.089	0.044	0.05%	
Al-Arabiya Real Estate	0.029	0.000	0.00%	0.35	NM	0.00	15	-1.0%	-31.0%	0.00	0.12	-23.1%	-7.3%	0.051	0.026	0.03%	
Aqar Real Estate Investments	0.058	-0.001	-2.36%	0.48	18.53	5.61	14	3.8%	-26.4%	0.00	0.05	2.6%	2.1%	0.093	0.052	0.03%	
Mashaer Holding	0.053	-0.001	-0.93%	0.63	NM	0.00	9	-3.3%	-24.2%	0.02	0.41	-6.5%	-3.2%	0.084	0.049	0.02%	
Dar Al Thuraya Real Estate	0.170	0.000	0.00%	1.47	25.07	0.00	25	0.0%	61.9%	0.00	0.00	6.0%	5.3%	0.172	0.092	0.06%	
Osos Holding Group	0.105	0.000	0.00%	0.92	8.36	9.52	11	-4.5%	0.0%	0.00	0.00	11.2%	7.1%	0.147	0.094	0.02%	
Al Massaleh Real Estate	0.036	-0.002	-5.07%	0.59	NM	0.00	8	1.7%	-31.7%	0.00	0.00	-15.4%	-3.2%	0.058	0.030	0.02%	
Kuwait Remal Real Estate	0.009	0.001	11.84%	1.09	NM	0.00	3	6.3%	-55.5%	0.01	0.65	-110.3%	-12.4%	0.024	0.007	0.01%	
Kuwait Real Estate Holding	0.032	-0.002	-5.00%	0.60	11.70	0.00	6	-5.0%	-38.8%	0.02	0.62	5.1%	1.7%	0.059	0.032	0.01%	
Taameer Real Estate Investment	0.025	0.001	2.93%	0.39	NM	0.00	5	3.4%	-40.4%	0.00	0.05	-6.5%	-4.9%	0.054	0.018	0.01%	
Sanam Real Estate	0.065	0.000	0.00%	0.85	28.88	0.00	8	-0.2%	-18.0%	0.00	0.00	2.9%	2.8%	0.100	0.053	0.02%	
Mena Real Estate	0.029	-0.001	-1.69%	0.26	NM	0.00	4	0.3%	-42.0%	0.00	0.13	-6.8%	-5.4%	0.098	0.028	0.01%	
Al Masaken International Real Estate Developmen	0.026	-0.001	-4.01%	0.42	NM	0.00	3	-7.7%	-40.1%	0.00	0.01	-1.1%	-0.4%	0.058	0.026	0.01%	
Real Estate Trade Centers	0.056	0.004	8.46%	0.32	23.60	0.00	8	9.9%	-19.4%	0.04	0.67	1.3%	1.1%	0.123	0.043	0.02%	
Land United Real Estate	0.068	0.000	0.00%	0.60	NM	0.00	10	0.0%	-27.6%	0.00	0.00	-4.8%	-1.5%	0.118	0.052	0.02%	
Total Real Estate - 34 Companies							2,608			2.37	18.39					5.88%	

DAILY MARKET COVERAGE REPORT

NIC MENA SECURITIES - RESEARCH AND STUDIES DEP



Technology	Price			Valuation Multiples			MKT Cap	Price Performance		Trading Indicators		ROE	ROA	52 Week (KD)		MKT Cap
	Close (KD)	Day Δ	Day % Δ	PBV(X)	PE(X)	DY%	Mn KD	MTD(%)	YTD (%)	Value (Mn KD)	(Mn Shrs)	(%)	(%)	High	Low	%
Automated Systems	0.083	-0.004	-4.37%	0.73	NM	0.00	8	-0.7%	-11.5%	0.01	0.08	-3.4%	-3.0%	0.110	0.074	0.02%
Total Technology - 1 Companies				0.73	NM	0.0%	8			0.01	0.08	-3.40%	-2.96%			0.02%

Telecom	Price			Valuation Multiples			MKT Cap	Price Performance		Trading Indicators		ROE	ROA	52 Week (KD)		MKT Cap
	Close (KD)	Day Δ	Day % Δ	PBV(X)	PE(X)	DY%	Mn KD	MTD(%)	YTD (%)	Value (Mn KD)	(Mn Shrs)	(%)	(%)	High	Low	%
Mobile Telecommunications	0.605	0.004	0.67%	2.20	14.30	5.49	2,618	1.0%	1.7%	2.69	4.47	15.6%	4.3%	0.698	0.564	5.90%
Kuwait Telecommunications	0.593	0.002	0.34%	2.56	13.06	5.08	592	0.5%	38.7%	0.20	0.34	20.3%	11.1%	1.189	0.418	1.33%
National Mobile Telecommunications	1.019	0.000	0.00%	0.96	13.22	3.43	511	-0.6%	63.3%	0.02	0.02	7.2%	4.2%	1.280	0.615	1.15%
AAN Digital Services	0.016	0.000	0.00%	0.60	NM	0.00	14	0.0%	-2.4%	0.00	0.00	NM	NM	0.020	0.016	0.03%
Hayat Communications	0.057	0.001	1.61%	0.46	NM	0.00	5	-3.6%	-46.3%	0.00	0.00	-0.7%	-0.3%	0.124	0.050	0.01%
Telecom - 5 Companies							3,740			2.92	4.83					8.42%

Utilities	Price			Valuation Multiples			MKT Cap	Price Performance		Trading Indicators		ROE	ROA	52 Week (KD)		MKT Cap
	Close (KD)	Day Δ	Day % Δ	PBV(X)	PE(X)	DY%	Mn KD	MTD(%)	YTD (%)	Value (Mn KD)	(Mn Shrs)	(%)	(%)	High	Low	%
Shamal Az-Zour Al-Oula Power & Water	0.194	0.001	0.52%	1.80	15.95	9.33	213	0.5%	-14.9%	0.08	0.40	14.8%	2.7%	0.246	0.188	0.48%
Total Utilities - 1 Companies							213			0.08	0.40					0.48%

Total Market 156 Companies				1.95	32.40	4.06	44,394			52.30	187.59					100%
-----------------------------------	--	--	--	-------------	--------------	-------------	---------------	--	--	--------------	---------------	--	--	--	--	-------------

End of Report

The information contained in this document is proprietary to NIC and is for use only by the persons to whom it is issued. This document is confidential and may not be distributed either in part or in whole without the express agreement of NIC. It is intended solely for the use of the individual or entity to whom it is addressed and others authorized to receive it.

Note : ROE and ROA is calculated based on LFY net profit & shareholders' equity and LFY Operating Profits & Total Assets

Sources : National Investments Company Research and Studies Departments, Boursa, Refinitiv.



شركة الاستثمار الوطنية
NATIONAL INVESTMENTS COMPANY

Sharq, Al Mutanabi Street, Khaleejia Tower | P.O. Box 25667, Safat 13117, Kuwait

T.: +965 2226 6666 | Fax: +965 2226 6793 | www.nic.com.kw